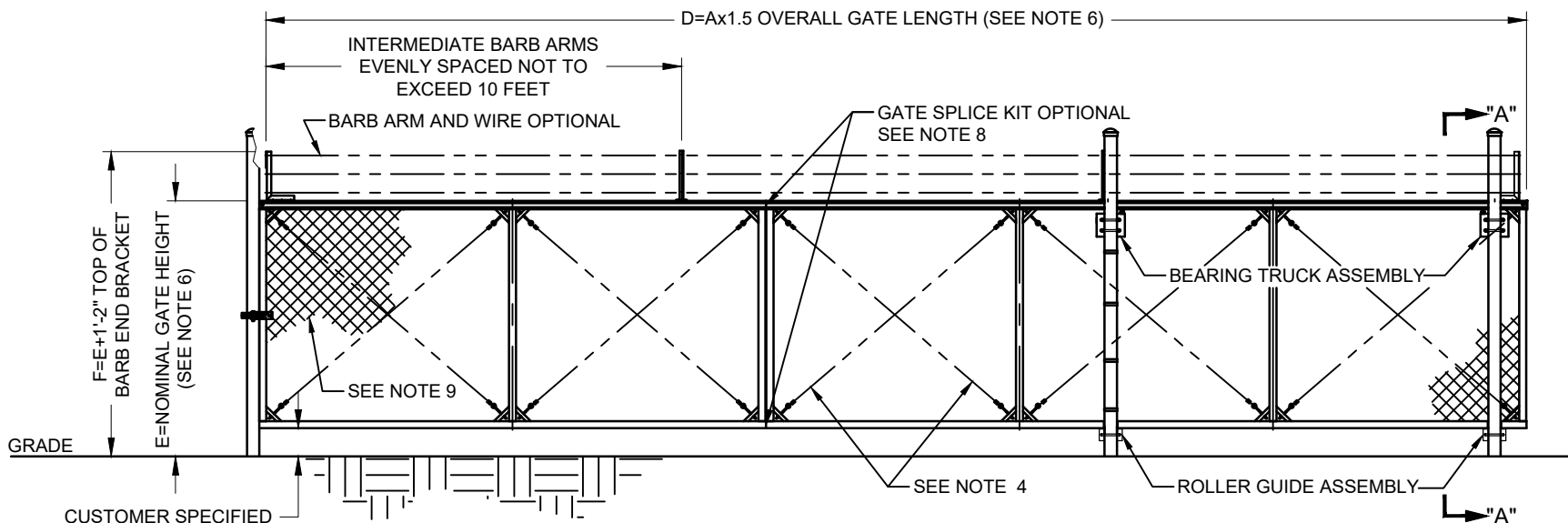


PLAN VIEW

SCALE: 1"=48"



ELEVATION

SCALE: 1"=48"
UNSECURED AREA LOOKING IN

NOTES:

- GATE OPERATOR INSTALLATION AND SAFETY STANDARD PER UL 325. (STANDARD FOR DOOR, DRAPERY, GATE, LOUVER, AND WINDOW OPERATORS AND SYSTEMS).
- GATE FABRICATION AND SAFETY STANDARD PER ASTM F2200 (AUTOMATED VEHICULAR GATE CONSTRUCTION)
- GATE FRAME CONSTRUCTED USING ALUMINUM 6061-T6 FOR SUPERIOR CORROSION RESISTANCE AND STRUCTURAL INTEGRITY.
- TWO 5/16" EYE BOLT AND 3/16" STAINLESS STEEL CABLES FOR GATE FRAME ADJUSTMENT.
- PRODUCT IS SOLD AS KITS i) GATE SEGMENT KIT, ii) GATE HARDWARE KIT, iii) BARB WIRE KIT AND iv) SPLICE KIT.
- SEGMENT HEIGHT OPTIONS, 5', 6', 7' AND 8'.
- SEGMENT LENGTH OPTIONS 10', 12' AND 18'.
- MULTIPLE SEGMENT LENGTH'S CAN BE SPLICED TOGETHER TO REACH REQUIRED OVERALL LENGTH.
- GATE OPENING IS FULLY SCREENED USING 11 GAUGE GALVANIZED STEEL CHAIN LINK.



927 Alloy Drive, Thunder bay Ontario P7B 5Z8
Ph. 807-623-3352 WWW.CMSSI.COM

TITLE:

**GATE INDUSTRIAL
CANTILEVER ALUMINUM**

APPROVED BY:
B. SYLVESTER

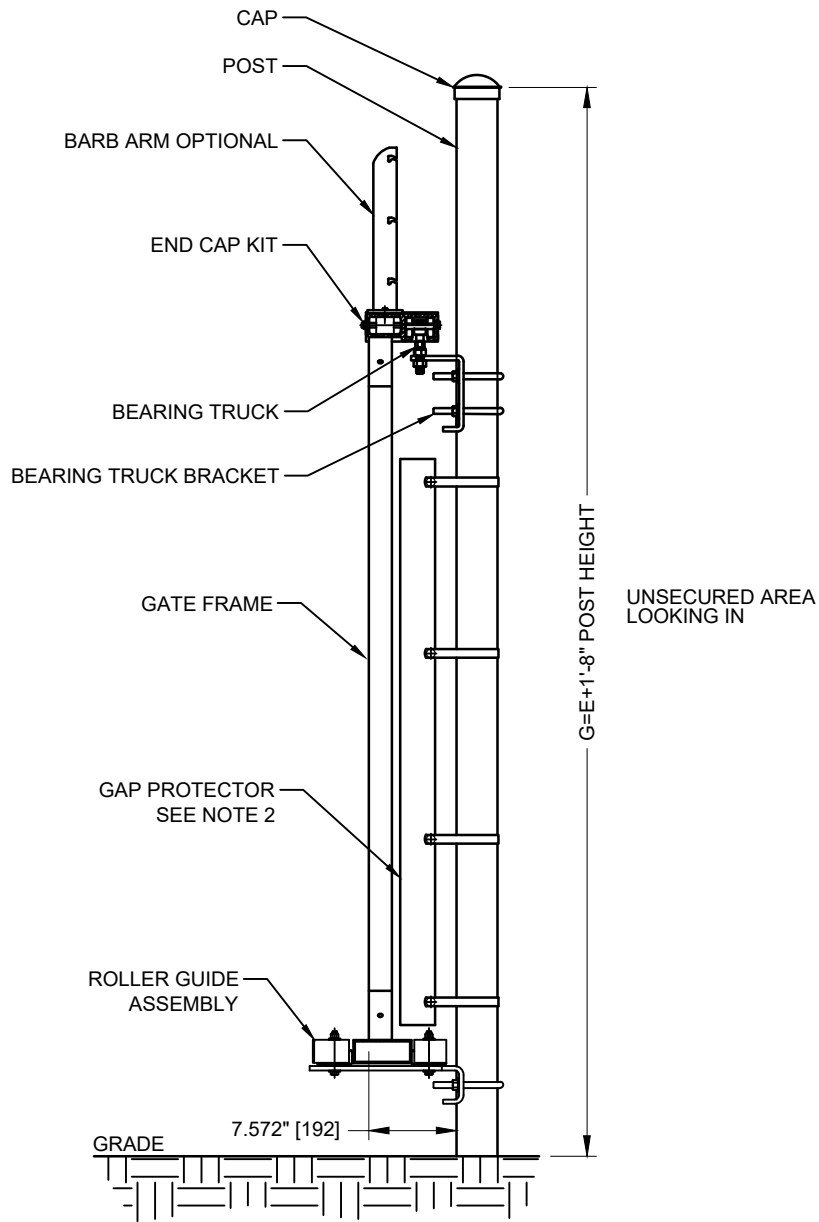
DRAWN BY:
P. SCARFO

DATE:
08/FEB/18

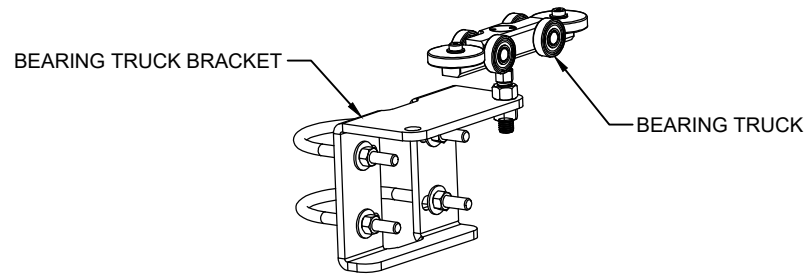
SCALE:
AS NOTED

DRAWING No:
GICA-SEGMENTED-0002

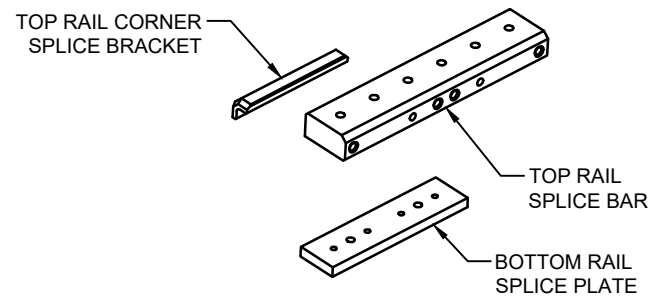
SHT No.:
1 OF 2



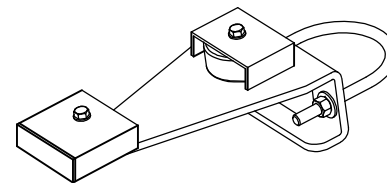
SECTION: A-A
SCALE: 1"=16"



BEARING TRUCK ASSEMBLY
SCALE: NTS



SPLICE KIT COMPONENTS
SCALE: NTS



ROLLER GUIDE ASSEMBLY
SCALE: NTS



927 Alloy Drive, Thunder bay Ontario P7B 5Z8
Ph. 807-623-3352 WWW.CMSSI.COM

TITLE:
**GATE INDUSTRIAL
CANTILEVER ALUMINUM**

APPROVED BY:
B. SYLVESTER

DRAWN BY:
P. SCARFO

DATE:
08/FEB/18

SCALE:
AS NOTED

DRAWING No:
GICA-SEGMENTED-0002

SHT No.:
2 OF 2